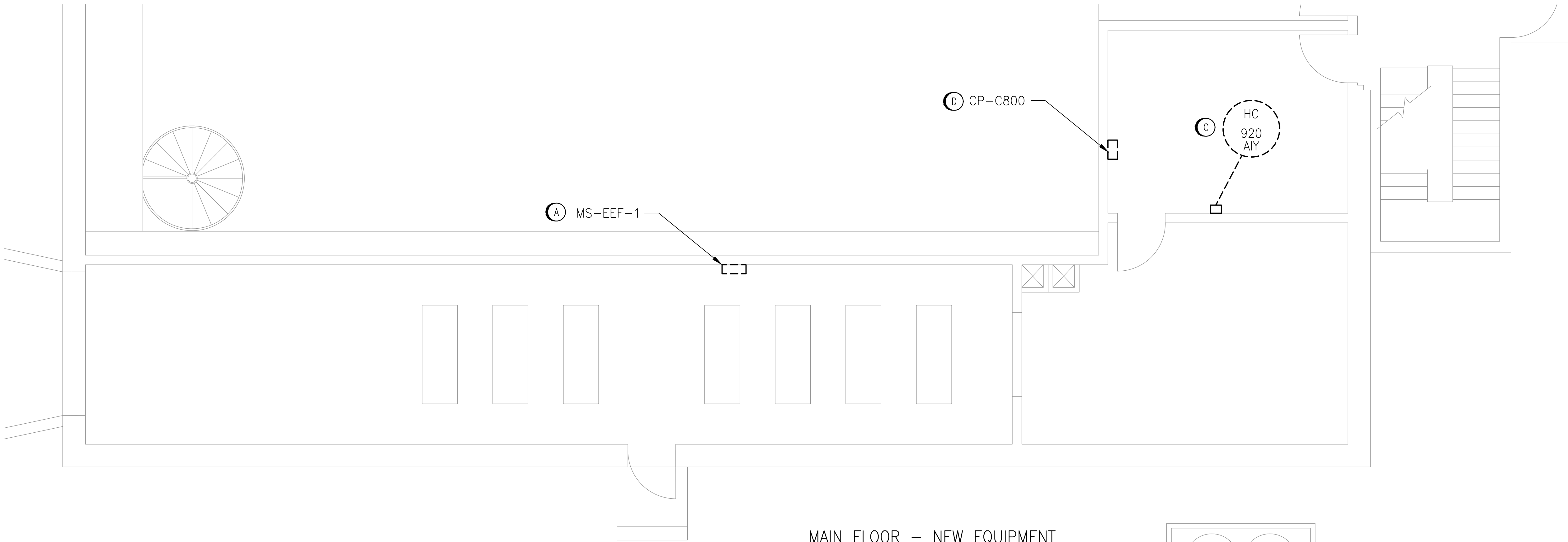


ROOF LEVEL - DEMOLITION
SCALE: 1:75



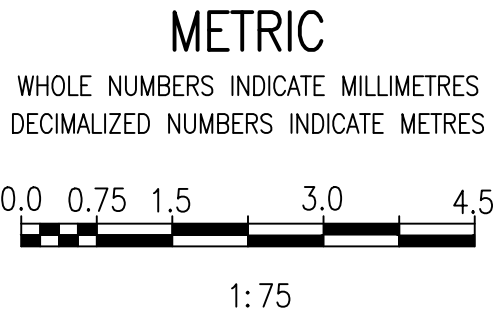
MAIN FLOOR - NEW EQUIPMENT
SCALE: 1:75

GENERAL NOTES:

1. ALL EQUIPMENT MARKED FOR DEMOLITION INCLUDES THE COMPLETE REMOVAL BACK TO THE SOURCE PANEL OF ANY EXISTING POWER AND CONTROLS SYSTEMS ASSOCIATED WITH THAT EQUIPMENT.

DEMOLITION NOTES:

- A DEMOLISH 600V ROOFTOP FAN EEF-1 AND ANY ASSOCIATED DISCONNECT SWITCH AND FIELD MOUNTED CONTROLS. DEMOLISH CABLING AND CONDUIT FROM FAN TO FIELD MOUNTED STARTER MS-EEF-2 LOCATED IN THE TONNER STORAGE AND FROM THE STARTER PANEL TO THE SOURCE PANEL. DEMOLISH FIELD MOUNTED STARTER PANEL MS-EEF-2. RETURN SALVAGE PARTS TO THE CITY.
- B DEMOLISH EXISTING ROOFTOP FAN-1 AND ANY ASSOCIATED DISCONNECT SWITCH AND FIELD MOUNTED CONTROLS. DEMOLISH CABLING AND CONDUIT FROM FAN TO FIELD MOUNTED STARTER CP-C800 LOCATED IN THE CHLORINATOR EQUIPMENT ROOM AND FROM THE STARTER PANEL TO THE SOURCE PANEL. THE FIELD MOUNTED STARTER PANEL WILL BE RETAINED AND REUSED FOR THE NEW AIR HANDLING UNIT AHU-C601.
- C REMOVE EXISTING CHLORINE GAS DETECTION CONTROLLER HC-920-AIY AND ASSOCIATED CHLORINE GENERATOR AND SENSORS. EXISTING CHLORINE HORNS AND STROBES ARE BEING REUSED AND REWIRED TO NEW CONTROLLERS. CONTRACTOR TO RETAIN EXISTING WIRING/ CONDUIT TO HORNS AND STROBES WHERE POSSIBLE AND MODIFY/ADD ACCORDINGLY. EXISTING GAS DETECTION CONTROLLER SHALL REMAIN IN OPERATION UNTIL NEW SYSTEM IS INSTALLED, COMMISSIONED AND PUT IN SERVICE. CONTRACTOR TO ENSURE CONSTRUCTION SCHEDULE FACILITATES THIS MANDATE.
- D DEMOLISH EXISTING CONTROL PANEL CP-C800. DEMOLISH CABLING AND CONDUIT FROM PANEL TO END DESTINATIONS. RETURN SALVAGED PANEL AND ALL EQUIPMENT IN PANEL TO THE CITY.



REVISIONS			
NO.	REVISIONS	DATE	DESIGN CHECK
00	ISSUED FOR TENDER AND CONSTRUCTION	2025/04/30	VE VE

AtkinsRéalis 148 Nature Park Way, Winnipeg, Manitoba Canada R3P 0X7 204-786-8080	
DESIGNED BY: B. WILKS	CHECKED BY: V. ELIMBAN
DRAWN BY: B. WILKS	APPROVED BY: V. ELIMBAN
SCALE: 1:75	ISSUED FOR CONSTRUCTION BY: M. SKINNER DATE: 2025/04/30
DATE: 2023/05/11	CONSULTANT NO.:

ENGINEER'S SEAL

THE CITY OF WINNIPEG WATER AND WASTE DEPARTMENT			
HURST PUMPING STATION CHLORINE SYSTEM UPGRADES ELECTRICAL EQUIPMENT LAYOUT MAIN FLOOR DEMOLITION			
CITY DRAWING NUMBER 1-0650M-E0044	SHEET 001	REV. 00	SIZE A1